

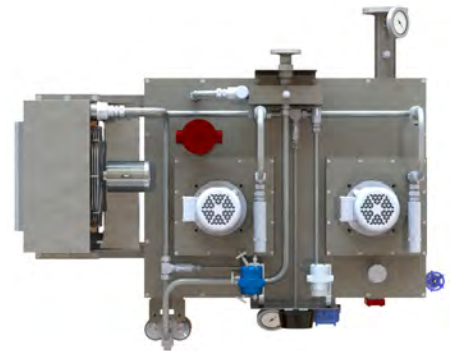
# 600 Series Lube Oil System

## Dual Pump Design

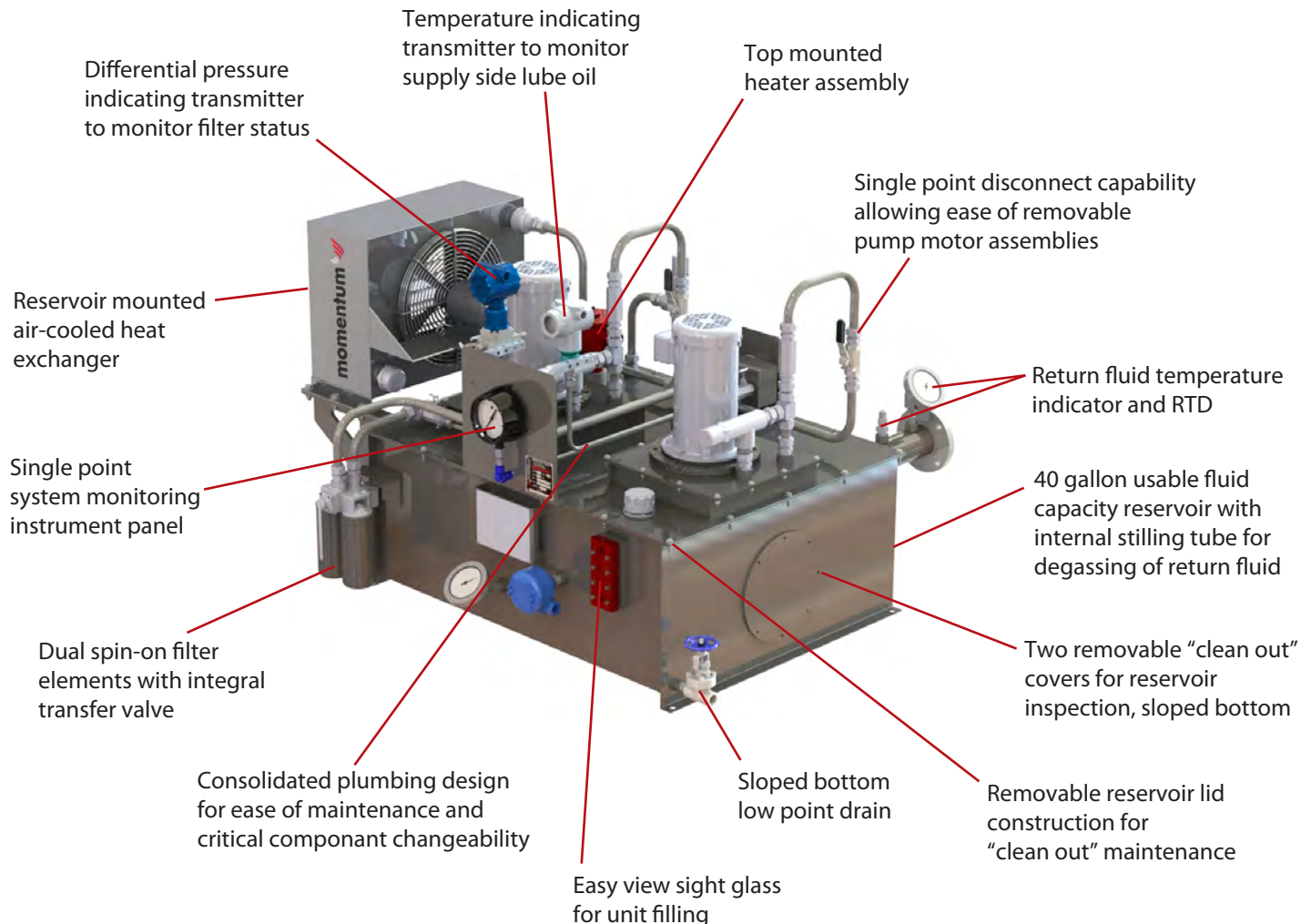
For non shaft-driven applications

## FEATURES

- Configured for ease of maintenance
- Reduces lubrication piping and facilitates pump maintenance
- Full-flow pump protection and system pressure control valves
- Top entry heating element:
  - Eliminates requirement to drain reservoir for heating element replacement
  - Mitigates flooding of heater control head associated with side entry design



Top View



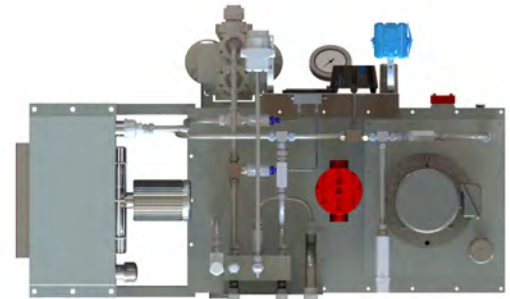
# 600 Series Lube Oil System

## Single Pump Design

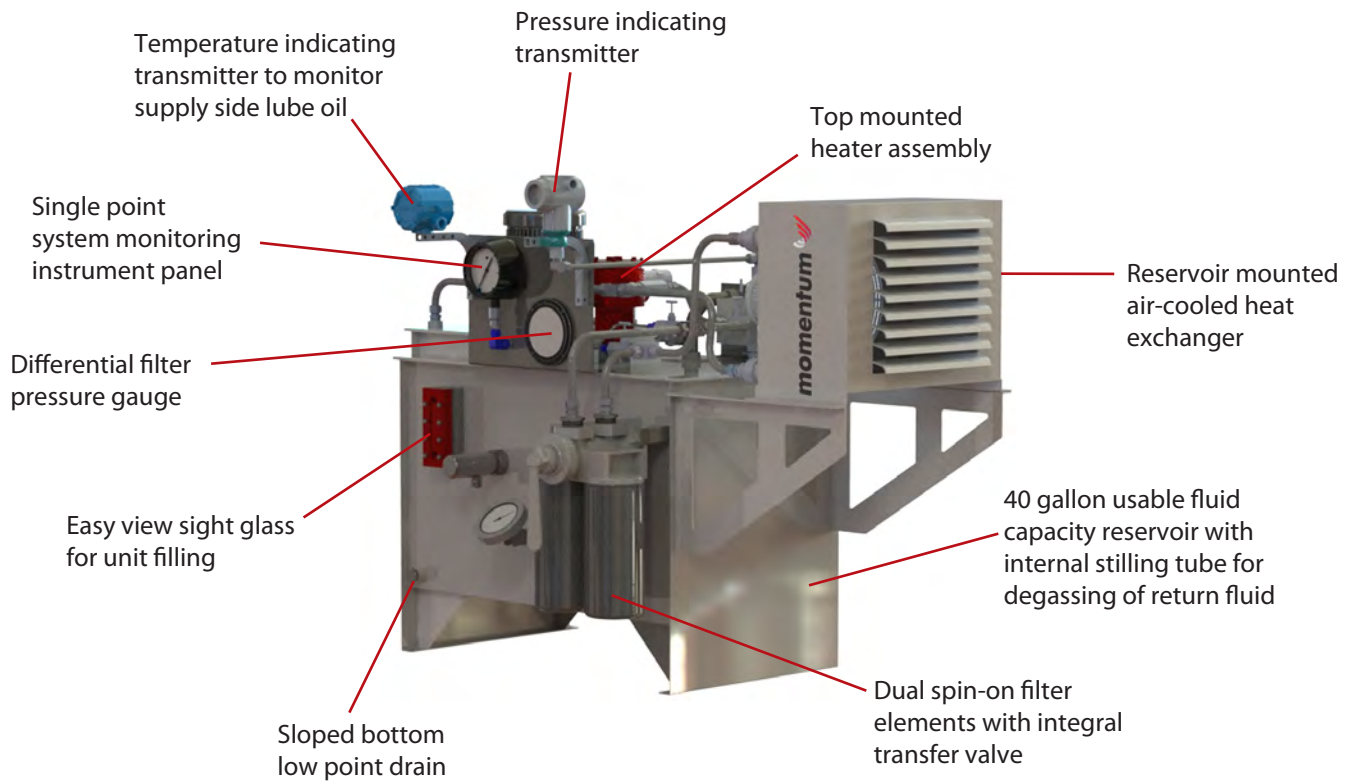
For applications with shaft-driven primary pumps.

## FEATURES

- Compact design
- Configured for ease of maintenance
- Full-flow pump protection and system pressure control valves



Top View



*Standard Design, 8 Week Delivery*

Momentum Engineered Systems  
8305 Monroe Rd. • Houston, Texas USA  
www.momentumsys.com • 832-804-7424



Navigate *iSYS*



**SELECT,  
CONFIGURE &  
BUY ONLINE**  
www.momentumsys.com